

CUSTOMFLEX® ARTIFICIALIRIS

Case and Images provided courtesy of Christopher Riemann, MD, Cincinnati Eye Institute

VeoOphthalmics

**CASE
OF THE
MONTH**

May 2022

**Surgical Video
provided:**



39 y/o patient with a history of congenital aniridia, Morcher artificial iris/IOL implant 15 years ago, a Dohlman type 2 Keratoprosthesis 8 years ago and a pars plana tube shunt, who presented with a luxation of the Morcher device with two fractured haptics after a blunt trauma. VA was fluctuating from from his baseline of 20/70 to CF at 2 feet and he complained of debilitating glare.

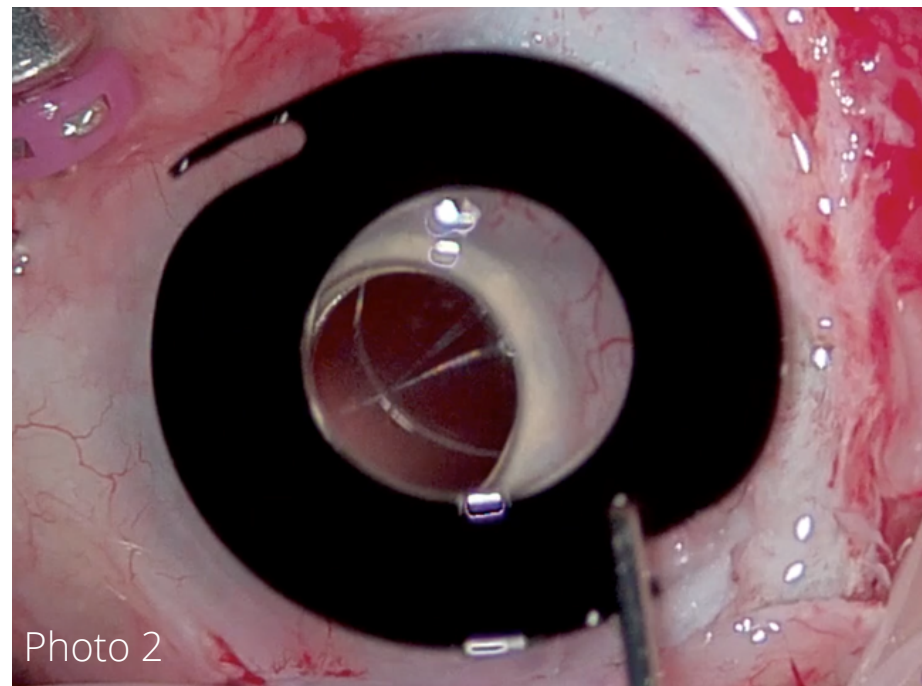
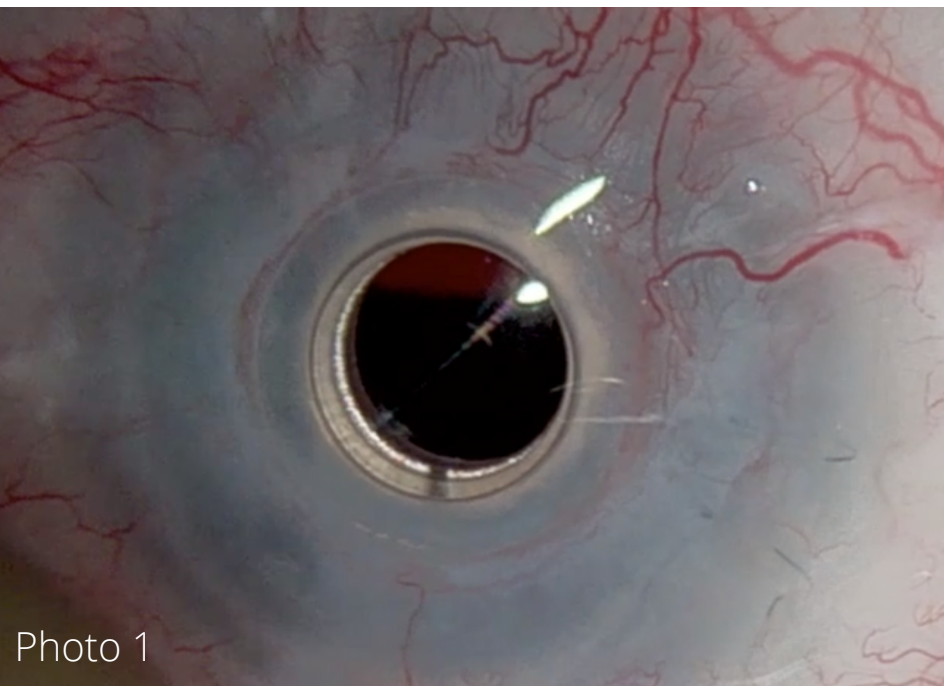


Photo 1
Preop photo shows the luxated Morcher device behind the K-Pro.

Photo 2
The Morcher device is removed by way of a 12mm sclera-corneal incision. Note both haptics are fractured.

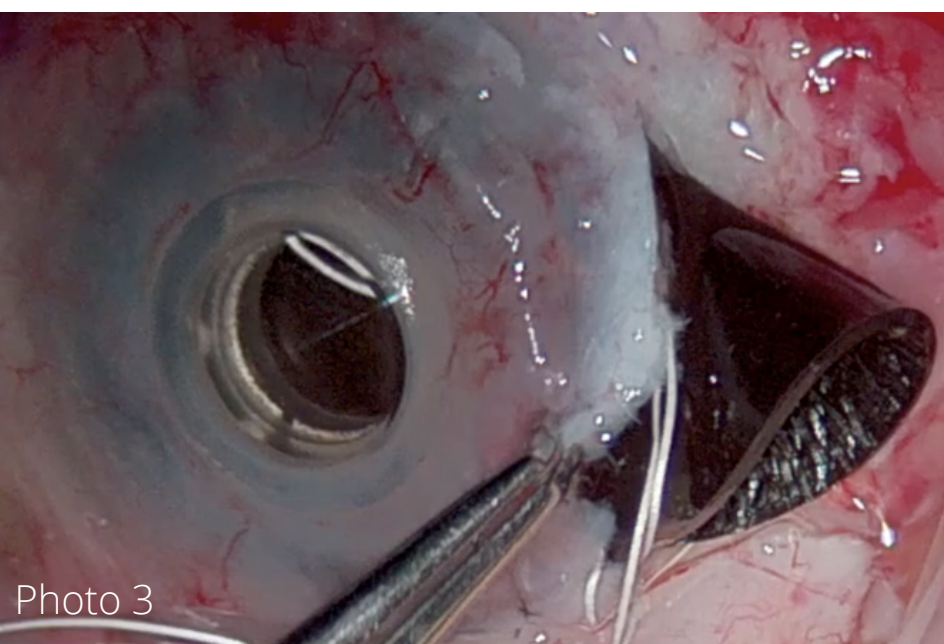


Photo 3
The black, With Fiber CUSTOMFLEX® ARTIFICIALIRIS device is placed in front of a newly scleral sutured CZ70 PCIOL. Preplaced CV-8 Goretex sutures are sharing the same sclerotomes used to sclerally fixate the PCIOL.

Photo 4
1 year postoperatively the IOL and CUSTOMFLEX® ARTIFICIALIRIS device are in perfect position, the vision has returned to 20/70 baseline and his glare complaints are resolved. He subjectively states that his vision is better with less glare than with the Morcher device.

To submit your case, please contact 513-872-1330 or ggravino@veo-ophthalmics.com